

OKSAN[®]
RUBBER

confidence
sturdiness
quality

PRODUCT
CATALOGUE



www.oksankaucuk.com.tr

www.oksankaucuk.com.tr

ABOUT Us

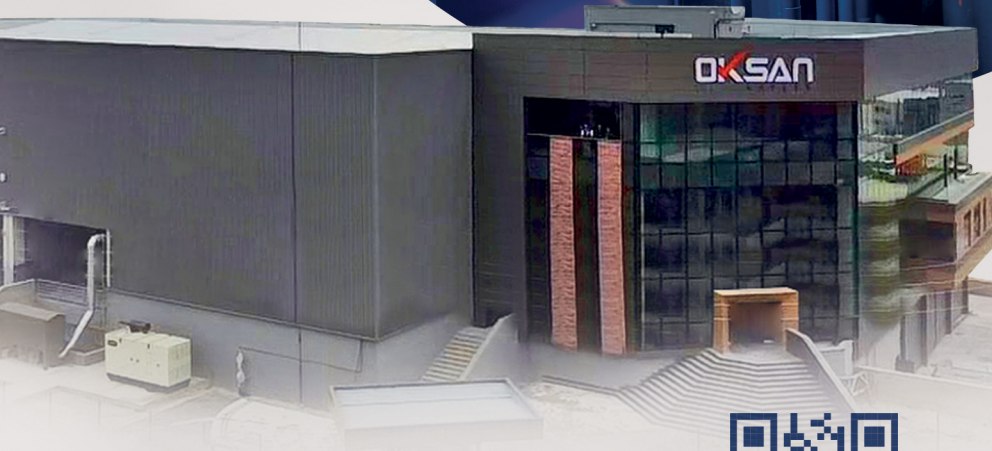
OKSAN is one of the largest aftermarket manufacturer for engine and shock absorber mountings, steering wheel and axle bellows, wishbone arm and link stabilizer bushes, ball joint dust covers, and another industrial rubber parts of passenger and light commercial vehicles in its own sector. Oksan, since the day the production started in 1980, as a result of targeting market and customer desires, we could be able to reach the highest level of quality in the entire company. All the necessary investments to maintain and complete activities have been realized without cease. In 2004, as a natural result of all these progresses, ISO 9001 Quality Management System certificate could have been awarded until today and in October 2008 the re-certification was upgraded to ISO 9001:2008 revision.



ISO
9001
CERTIFICATION
EUROPE™



42 years of experience



www.oksankaucuk.com.tr



OKSAN[®]
RUBBER



VOLVO



AXLE BELLOWS

RE094



COMPATIBLE VEHICLES :
S40 I (VS) 1995-2003
V40 Combi (VW) 1995-2004
V40 Station Wagon (VW) 1995-2004

OEM NO : 7701471522, 7700108269

SHOCK ABSORBER MOUNTING (REAR)

BW106



COMPATIBLE VEHICLES :
V50 (545) 2004-2012
S40 II (544) 2004-2012

OEM NO : 33521132088

SHOCK ABSORBER MOUNTING

FO014



COMPATIBLE VEHICLES :
C30 2006-
S40 II (MS) 2004-
V50 (MW) 2004-

OEM NO : 1230960, 1255747, 1305330, 1305954, 1308718

SHOCK ABSORBER MOUNTING, KIT

FO014-K



COMPATIBLE VEHICLES :
V50 (MW) 2004-
S40 II (MS) 2004-
C30 2006-

OEM NO : 1223835, 1230960, 1250820, 1255350, 1255747

SHOCK ABSORBER MOUNTING (REAR)

FO080



COMPATIBLE VEHICLES :
V50 (545) 2004-2012
S40 II (544) 2004-2012

OEM NO : 30647413, 30678433, 30714349, BR55-28-910E,

SHOCK ABSORBER CHOCK

VO009



COMPATIBLE VEHICLES :
XC90 I (275) 2002-2014
V70 II (285) 1999-2007
S80 I (184) 1998-2006
S60 I (384) 2000-2010
C70 I Cabrio (873) 1998-2005

OEM NO : 30 683 637, 8 646 713, 9 173 203, 9 461 728, 903 978

STRUT MOUNTING

VO010



COMPATIBLE VEHICLES :
S40 I (644) 1995-2004
V40 Station wagon (645) 1995-2004

OEM NO : 30616824

WISHBONE ARM BUSH

FO022



COMPATIBLE VEHICLES :
V50 (MW) 2004-
S40 II (MS) 2004-

OEM NO : 1061670, 1254368, 1304124, 30666331, 30666821

BALANCE ARM BUSH

FO949



COMPATIBLE VEHICLES :
C70 II Convertible (542) 2006-2013
V50 (545) 2004-2012
S40 II (MS) 2004-
C30 2006-

OEM NO : 1061668, 1231455, 1105524, 1253734, 1223958

BUSH FOR WISHBONE, BIG

FO979



COMPATIBLE VEHICLES :
C30 2006-
S40 II (MS) 2004-
V50 (MW) 2004-

OEM NO : 30678440, 1488111, 1332075, 3M613A262BP, 1477858

BUSH FOR WISHBONE, BIG (HYDRAULIC)

FO979-H



COMPATIBLE VEHICLES :

V50 (MW) 2004-
S40 II (MS) 2004-
C30 2006-

OEM NO : 30678440, 1488111, 1332075, 3M613A262BP, 1477858

BUSH FOR WISHBONE, BIG KIT

FO979-K



COMPATIBLE VEHICLES :

C30 2006-
S40 II (MS) 2004-
V50 (MW) 2004-

OEM NO : 30678440, 1488111, 1332075, 3M613A262BP, 1477858

BUSH FOR WISHBONE, SMALL

FO980



COMPATIBLE VEHICLES :

V50 (MW) 2004-
S40 II (MS) 2004-
C30 2006-

OEM NO : 30714128, 31212980, 1502086, 1502087, 1570748

BUSH FOR REAR WISHBONE, SMALL

FO981



COMPATIBLE VEHICLES :

S40 II (MS) 2004-
V50 (MW) 2004-

OEM NO : 1061666*, 1064128*, 1150353*, 30666105*, 1061664*

BUSH FOR REAR WISHBONE, BIG

FO982



COMPATIBLE VEHICLES :

S40 II (MS) 2004-
V50 (MW) 2004-

OEM NO : 1061666*, 1064128*, 1150353*, 30666105*, 1061664*

SMALL BUSH FOR CONTROL ARM

FO986



COMPATIBLE VEHICLES :

S60 II 2010-
S80 II (AS) 2006-
V60 2010-
V70 III (BW) 2007-
XC60 2008-

OEM NO : 1458773, 1469024, 1466186, 1507181, 1460693

BIG BUSH FOR CONTROL ARM (L)

FO987



COMPATIBLE VEHICLES :

XC70 II 2007-
XC60 2008-
V70 III (BW) 2007-
V60 2010-
S80 II (AS) 2006-

OEM NO : 6G9N3A052DG *, 7G9N3A052BA *, 6G9N3A052DH *

BIG BUSH FOR CONTROL ARM (R)

FO988



COMPATIBLE VEHICLES :

S60 II 2010-
S80 II (AS) 2006-
V60 2010-
V70 III (BW) 2007-
XC60 2008-

OEM NO : 6G9N3A052DG *, 7G9N3A052BA *, 6G9N3A052DH *

BUSH FOR TRACK ROD

FO992



COMPATIBLE VEHICLES :

V50 (MW) 2004-
S40 II (MS) 2004-
C30 2006-

OEM NO : 1448127*, 1502440*, 6M515500BA*, 1752565*, 1061660*

BIG BUSH FOR LOWER WISHBONE, LEFT

MI100



COMPATIBLE VEHICLES :

S40 I (VS) 1995-2003
V40 Combi (VW) 1995-2004

OEM NO : MB808909, MB907165*, MB912077*, MB907163*

BIG BUSH FOR LOWER WISHBONE, RIGHT

MI101



COMPATIBLE VEHICLES :
S40 I (VS) 1995-2003
V40 Combi (VW) 1995-2004

OEM NO : MB808910, MB907166*, MB912078*, MB907164*

CONTROL ARM BUSHING

VO007



COMPATIBLE VEHICLES :
S90 II (234) 2016-
V90 II Station Wagon (235,236) 2016-
XC60 II (246) 2017-
XC90 II (256) 2014-

OEM NO : 31360583

BUSH FOR WISHBONE

VO014



COMPATIBLE VEHICLES :
XC70 CROSS COUNTRY 1997-2002
V70 II (SW) 2000-2007
S80 I (TS,XY) 1998-2006
S60 I 2000-2010

OEM NO : 9173761

SMALL BUSH FOR LOWER WISHBONE

VO100



COMPATIBLE VEHICLES :
S40 I (VS) 1995-2003
V40 Combi (VW) 1995-2004
V40 Station Wagon (VW) 1995-2004

OEM NO : 30818467

FRONT SUSPENSION WISHBONE BUSHING,

VO101



COMPATIBLE VEHICLES :
S40 I (VS) 1995-2003
V40 Combi (VW) 1995-2004
V40 Station Wagon (VW) 1995-2004

OEM NO : 30872511

FRONT SUSPENSION WISHBONE BUSHING,

VO102



COMPATIBLE VEHICLES :
S40 I (VS) 1995-2003
V40 Combi (VW) 1995-2004
V40 Station Wagon (VW) 1995-2004

OEM NO : 30872510

BUSH FOR WISHBONE (ONLY TURBO)

VO118



COMPATIBLE VEHICLES :
S70 (LS) 1997-
V70 I (LV) 1997-
850 (LS) 1995-1996
850 Combi (LW) 1995-1996
XC70 CROSS COUNTRY 1997-2002

OEM NO : 272337*, 272336*, 8628497*, 9492673*, 9140976*

BUSH FOR WISHBONE

VO119

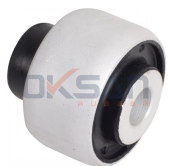


COMPATIBLE VEHICLES :
XC70 CROSS COUNTRY 1997-2002
850 Station Wagon (LW) 1993-1996
850 (LS) 1995-1996
V70 I (LV) 1997-
S70 (LS) 1997-

OEM NO : 6800251, 6550145P, 271631

WISHBONE ARM BUSH, SMALL

VO122-M



COMPATIBLE VEHICLES :
S60 I 2000-2010
S80 I (TS,XY) 1998-2006
V70 II (SW) 2000-2007

OEM NO : 8630604, 9461626, 31360784

WISHBONE ARM BUSH, BIG

VO123



COMPATIBLE VEHICLES :
S60 I 2000-2010
S80 I (TS,XY) 1998-2006
V70 I (LV) 1997-
V70 II (SW) 2000-2007
XC70 CROSS COUNTRY 1997-2002

OEM NO : 9443882, 9465971, 9173618

SMALL BUSH KIT FOR WISHBONE (TURBO)

VO124



COMPATIBLE VEHICLES :

S70 (LS) 1997-
V70 I (LV) 1997-
850 (LS) 1995-1996
850 Combi (LW) 1995-1996
850 Station Wagon (LW) 1993-1996

OEM NO : 272273*, 8628493*, 9492287*, 9492532*, 9492675*

WISHBONE ARM BUSH REAR, LEFT

VO125



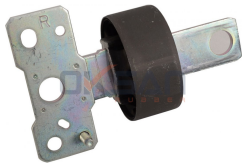
COMPATIBLE VEHICLES :

S60 II 2010-
S80 II (AS) 2006-
V60 2010-
V70 III (BW) 2007-

OEM NO : 1566838, 31277755, TKA181351, 6G915K896,

WISHBONE ARM BUSH REAR, RIGHT

VO126



COMPATIBLE VEHICLES :

S60 II 2010-
S80 II (AS) 2006-
V60 2010-
V70 III (BW) 2007-

OEM NO : 1566829, 31277754, TKA181352, 1533836, 1566841

WISHBONE ARM BUSH REAR, LEFT

VO127



COMPATIBLE VEHICLES :

S60 II 2010-
S80 II (AS) 2006-
V60 2010-
V70 III (BW) 2007-
XC60 2008-

OEM NO : TKA181353, 6G915K896

SERVICE KIT FOR WISHBONE ARM BUSH REAR

VO128



COMPATIBLE VEHICLES :

S60 II 2010-
S80 II (AS) 2006-
V60 2010-
V70 III (BW) 2007-
XC60 2008-

OEM NO : 31406120

ENGINE MOUNTING

FO044



COMPATIBLE VEHICLES :

V70 III (BW) 2007-

OEM NO : 6G916P082BD, 1376877, 1387564, 1434853, 30671248

ENGINE MOUNTING RIGHT-BENZIN

FO054



COMPATIBLE VEHICLES :

V50 (545) 2004-2012
V40 Crosscountry (525,526) 2013-
V40 Hatchback (525) 2012-
S40 II (MS) 2004-
C30 2006-

OEM NO : 3M516F012BH, 1567937, 1250618, 1230982, 1233493

ENGINE MOUNTING-DIESEL

FO056



COMPATIBLE VEHICLES :

C30 2006-
S40 II (MS) 2004-
V50 (545) 2004-2012

OEM NO : 1430067, 1568052, 1677276, 3M516F012CH,

ENGINE MOUNTING

VO006



COMPATIBLE VEHICLES :

S60 II 2010-
S70 III 2007-2012
S80 II (AS) 2006-
XC60 2008-
XC70 II 2007-

OEM NO : 1376883, 1405123, 1435996, 30680474, 6G926P082GA

SHOCK ABSORBER BEARING

R002-S



COMPATIBLE VEHICLES :

C30 2006-
S40 II (MS) 2004-
V50 (MW) 2004-

OEM NO : 1223835, 1230960, 1250820, 1255350, 1255747

GEARBOX MOUNTING

FO063



COMPATIBLE VEHICLES :

V50 (545) 2004-2012
V40 Hatchback (525) 2012-
S40 II (MS) 2004-
C30 2006-
C70 II Cabrio 2006-2013

OEM NO : 1224049, 1250824, 1355357, 1370874, 1404996

STABILIZER BAR RUBBER (Ø 21 MM)

FO062



COMPATIBLE VEHICLES :

V40 Hatchback (525) 2012-

OEM NO : 1715440, 1686183, 1718026, AV615484AA, BV615484AAA

STABILIZER BAR RUBBER, FRONT (Ø17 MM)

VO013



COMPATIBLE VEHICLES :

S40 I (644) 1995-2004
V40 Station wagon (645) 1995-2004

OEM NO : 30884518

STABILIZER LINK

FO053



COMPATIBLE VEHICLES :

V40 Hatchback (525) 2012-
V40 Crosscountry (525,526) 2013-
C30 2006-

OEM NO : 1 500 682, 1 719 542, 8M51 5E494 AA, 8M51 5E494 AB,

BUSH FOR LINK STABILIZER REAR

FO978



COMPATIBLE VEHICLES :

XC70 II 2007-
XC60 2008-
V70 III (BW) 2007-
V60 2010-
S80 II (AS) 2006-

OEM NO : 1425853*, 1377416*, 30760678*, 3073685*

BUSH FOR LINK STABILIZER

VO120



COMPATIBLE VEHICLES :

V40 Combi (VW) 1995-2004
S40 I (VS) 1995-2003

OEM NO : 30620785*, 30818091*, 30818092*, 30620786*, 30884360*

BUSH FOR LINK STABILIZER

VO121



COMPATIBLE VEHICLES :

S40 I (VS) 1995-2003
V40 Combi (VW) 1995-2004

OEM NO : 30620785*, 30818091*, 30818092*, 30620786*, 30884360*

SEAL RING, OIL DRAIN PLUG

M17



COMPATIBLE VEHICLES :

C30 2006-
S40 II (MS) 2004-
V50 (545) 2004-2012
V50 (MW) 2004-
V70 III (BW) 2007-

OEM NO : 1005593, 1 005 593

BALANCE ARM, REAR

FO084



COMPATIBLE VEHICLES :

C30 (533) 2006-2012
C70 II Cabrio (542) 2006-2013
S40 II (544) 2004-2012
V50 (545) 2004-2012

OEM NO : 1 061 668*, 1 100 983, 1 105 524*, 1 223 958*, 1 231 455*

HOSE, CRANKCASE BREATHER

VO015



COMPATIBLE VEHICLES :

V70 II (285) 1999-2007
C70 I Coupe (872) 1997-2002
C70 I Cabrio (873) 1998-2005
S40 I (644) 1995-2004
S70 (874) 1996-2000

OEM NO : 8653339

Note

A series of horizontal dotted lines for writing notes, spanning the width of the page.

Note

A series of horizontal dotted lines for writing notes.

www.oksankaucuk.com.tr



**one of the biggest manufacturers
of automotive industry**

📍 Kayapa Organize Sanayi Bölgesi Kayapa Sanayi Bulvarı
No: 25/1 Nilüfer - Bursa / Türkiye

☎ +90 (224) 483 41 27

✉ info@oksankaucuk.com.tr